



ADDENDUM # 2

Date: 6/14/2024

PROPOSAL ID #2929

IFB #2929 Concrete Pad Addition for Recovered Materials Processing Facility

THE FOLLOWING INFORMATION SHALL BE INCORPORATED AS PART OF THE ABOVE MENTIONED SOLICITATION; ALL OTHER TERMS AND CONDITIONS SHALL REMAIN THE SAME. THIS ADDENDUM BECOMES A PART OF THE CONTRACT DOCUMENTS AND MODIFIES THE ORIGINAL CONTRACT DOCUMENTS DATED MAY 20, 2024. ALL BIDDERS SHALL ACKNOWLEDGE RECEIPT OF THIS ADDENDUM IN THE BID PROPOSAL FORMS.

Change 1: Solicitation Cover Page Revision –

Submission Deadline has been revised to read:

Due Date/Time: June 27, 2024 at 4:00 p.m.

Change 2: Project Manual Revisions –

AGREEMENT - DIVISION I – SECTION 4A, 5.1.1 has been revised to read:

Within 30 days after receipt by the OWNER of the CONTRACTOR's request for partial payment, the OWNER shall make partial payments to the CONTRACTOR, on the basis of the estimate of Work as approved by the ENGINEER, for work performed during the preceding calendar month, less ten percent (10%) of the amount of such estimate which is to be retained by the OWNER until all Work has been performed strictly in accordance with this Agreement and until such Work has been accepted by the OWNER.

Change 3: Plan Revisions/Additions -

Plan sheet S1.01 has been revised and is attached.

Attachment: Revised Plan Sheet S1.01

END OF ADDENDUM NO. 2

GENERAL STRUCTURAL NOTES

GENERAL:

- THE DRAWINGS ARE INTENDED TO SHOW THE GENERAL ARRANGEMENT, DESIGN AND EXTENT OF THE WORK AND ARE PARTLY DIAGRAMMATIC. THEY ARE NOT INTENDED TO BE SCALED FOR ROUGHING-IN MEASUREMENTS, OR TO SERVE AS SHOP DRAWINGS OR PORTIONS THEREOF.
- ALL DETAILS AND SECTIONS SHOWN ON THE DRAWINGS ARE INTENDED TO BE TYPICAL AND SHALL BE CONSTRUED TO APPLY TO ANY SIMILAR SITUATION ELSEWHERE ON THE PROJECT, EXCEPT WHERE A DIFFERENT DETAIL IS SHOWN.
- THE CONTRACTOR AND ALL SUBCONTRACTORS SHALL VERIFY ALL GRADES, LINES, LEVELS, CONDITIONS AND DIMENSIONS AT THE JOB SITE AND AS SHOWN ON THE DRAWINGS. THEY SHALL REPORT ANY ERRORS OR INCONSISTENCIES IN THE ABOVE RESPONSIBILITY FOR SAFETY BEFORE COMMENCING WORK. THE CONTRACTOR AND SUBCONTRACTORS SHALL LAY OUT THEIR WORK FROM ESTABLISHED REFERENCE POINTS AND BE RESPONSIBLE FOR ALL LINES, ELEVATIONS AND MEASUREMENTS IN CONNECTION WITH THEIR WORK.
- PROTECTION:
 - THE CONTRACTOR IS RESPONSIBLE AND SHALL COMPLY WITH THE REQUIREMENTS OF THE NORTH CAROLINA STATE BUILDING CODE AND ALL LOCAL, STATE AND FEDERAL LAWS. THE ENGINEER AND HIS EMPLOYEES ARE NOT RESPONSIBLE FOR SAFETY PROCEDURES ON THIS PROJECT. THIS IS THE CONTRACTOR'S RESPONSIBILITY.
 - PROVIDE ALL SHORING, BRACING AND SHEETING AS REQUIRED FOR THE PROPER EXECUTION OF THE WORK. REMOVE WHEN THE WORK IS COMPLETED.
 - PROVIDE AND MAINTAIN GUARD LIGHTS AT ALL BARRICADES, RAILINGS, OBSTRUCTIONS IN THE STREETS, ROADS OR SIDEWALKS AND ALL TRENCHES OR PITS ADJACENT TO PUBLIC WALKS OR ROADS.
 - AT ALL TIMES PROVIDE PROTECTION AGAINST WEATHER (RAIN, WIND, STORMS OR HEAT) SO AS TO MAINTAIN ALL WORK, MATERIALS, APPARATUS AND FIXTURES FREE FROM DAMAGE.
 - THE CONTRACTOR SHALL PAY FOR ALL DAMAGES TO ADJACENT STRUCTURES, SIDEWALKS AND TO STREETS OR OTHER PUBLIC PROPERTY OR TO ANY PUBLIC UTILITIES.
 - AT THE END OF THE DAY'S WORK COVER ALL WORK LIKELY TO BE DAMAGED. ANY WORK DAMAGED BY FAILURE TO PROVIDE PROTECTION SHALL BE REMOVED AND REPLACED WITH NEW WORK AT THE CONTRACTOR'S EXPENSE.
- IF ANY ERRORS OR OMISSIONS APPEAR IN THE DRAWINGS, SPECIFICATIONS OR OTHER DOCUMENTS THE CONTRACTOR SHALL NOTIFY THE ENGINEER IN WRITING OF SUCH OMISSIONS OR ERRORS PRIOR TO PROCEEDING WITH ANY WORK WHICH APPEARS IN QUESTION. IN THE EVENT OF THE CONTRACTOR'S FAILING TO GIVE SUCH NOTICE, HE SHALL BE HELD RESPONSIBLE FOR THE RESULTS OF ANY SUCH ERRORS OR OMISSIONS AND THE COST OF RECTIFYING THE SAME.
- THE CONTRACTOR SHALL USE THE STRUCTURAL DRAWINGS TOGETHER WITH THE CIVIL DRAWINGS TO LOCATE STEPPED FOOTINGS, DEPRESSED SLABS, SLOPES, DRAINS, OUTLETS, RECESSES, OPENINGS, REGLETS, BOLT SETTING, SLEEVES, DIMENSIONS, ETC. POTENTIAL CONFLICTS SHALL BE TRANSMITTED TO THE A/E BEFORE PROCEEDING WITH THE WORK.
- SUBMIT SHOP DRAWINGS OF ELECTRONIC PDF FOR A/E REVIEW BEFORE STARTING FABRICATION.
- NO SHOP DRAWINGS SHALL BE SUBMITTED FOR A/E REVIEW UNTIL AFTER THEY HAVE BEEN REVIEWED AND NOTED FOR CONSTRUCTION METHOD, DIMENSIONING AND OTHER TRADE REQUIREMENTS BY THE CONTRACTOR AND STAMPED WITH THE CONTRACTOR'S APPROVAL SEAL. ENGINEER ASSUMES NO RESPONSIBILITY FOR DIMENSIONS, QUANTITIES, ERRORS OR OMISSIONS AS A RESULT OF CHECKING AND REVIEWING ANY SHOP DRAWINGS. ANY ERRORS OR OMISSIONS MUST BE MADE GOOD BY CONTRACTOR, IRRESPECTIVE OF RECEIPT, CHECKING OR REVIEW OF DRAWINGS BY ENGINEER AND EVEN THOUGH WORK IS DONE IN ACCORDANCE WITH SUCH DRAWINGS.
- THE REVIEW OF ALL STRUCTURAL SUBMITTALS BY THE STRUCTURAL ENGINEER OF RECORD SHALL BE TO INSURE THAT HIS INTENT HAS BEEN UNDERSTOOD AND THAT THE SPECIFIED CRITERIA HAVE BEEN USED. A COPY OF ALL STRUCTURAL SUBMITTALS WILL BE RETAINED FOR RECORD KEEPING PURPOSES ONLY. WHERE CRITICAL DIMENSIONS CANNOT BE DETERMINED FROM THE PLANS, OR WHERE NEW WORK ADJOINS EXISTING CONSTRUCTION, OR WHERE ONE MATERIAL ADJOINS AN IN-PLACE MATERIAL, CONTRACTOR SHALL TAKE FIELD MEASUREMENTS AS REQUIRED TO COMPLETE SHOP DRAWINGS AND INSTALLATION. REPORT ANY DISCREPANCIES EXCEEDING 3% BETWEEN FIELD MEASURED DIMENSIONS AND SCALED DRAWING DIMENSIONS TO ARCHITECT BEFORE PROCEEDING WITH THE WORK.

EARTHWORK:

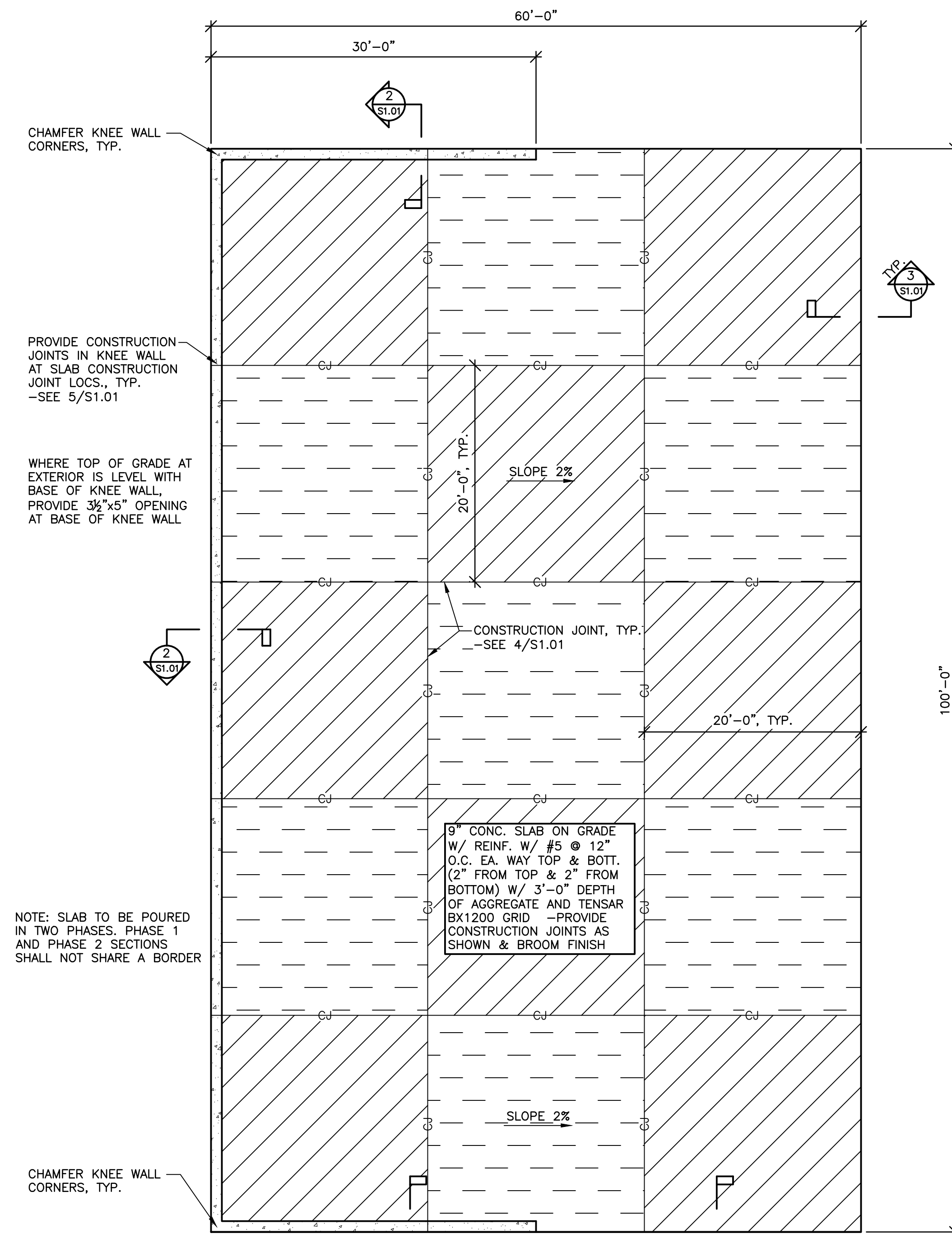
- CONTRACTOR SHALL DEWATER SITE AS NECESSARY, SO THAT ALL CONCRETE CAN BE PLACED IN THE DRY.
- SEE GEOTECH. FOR TENSAR BX1200 GRID SUBGRADE STABILIZATION & SUBMIT TO CIVIL/STRUCT FOR REVIEW.

CONCRETE:

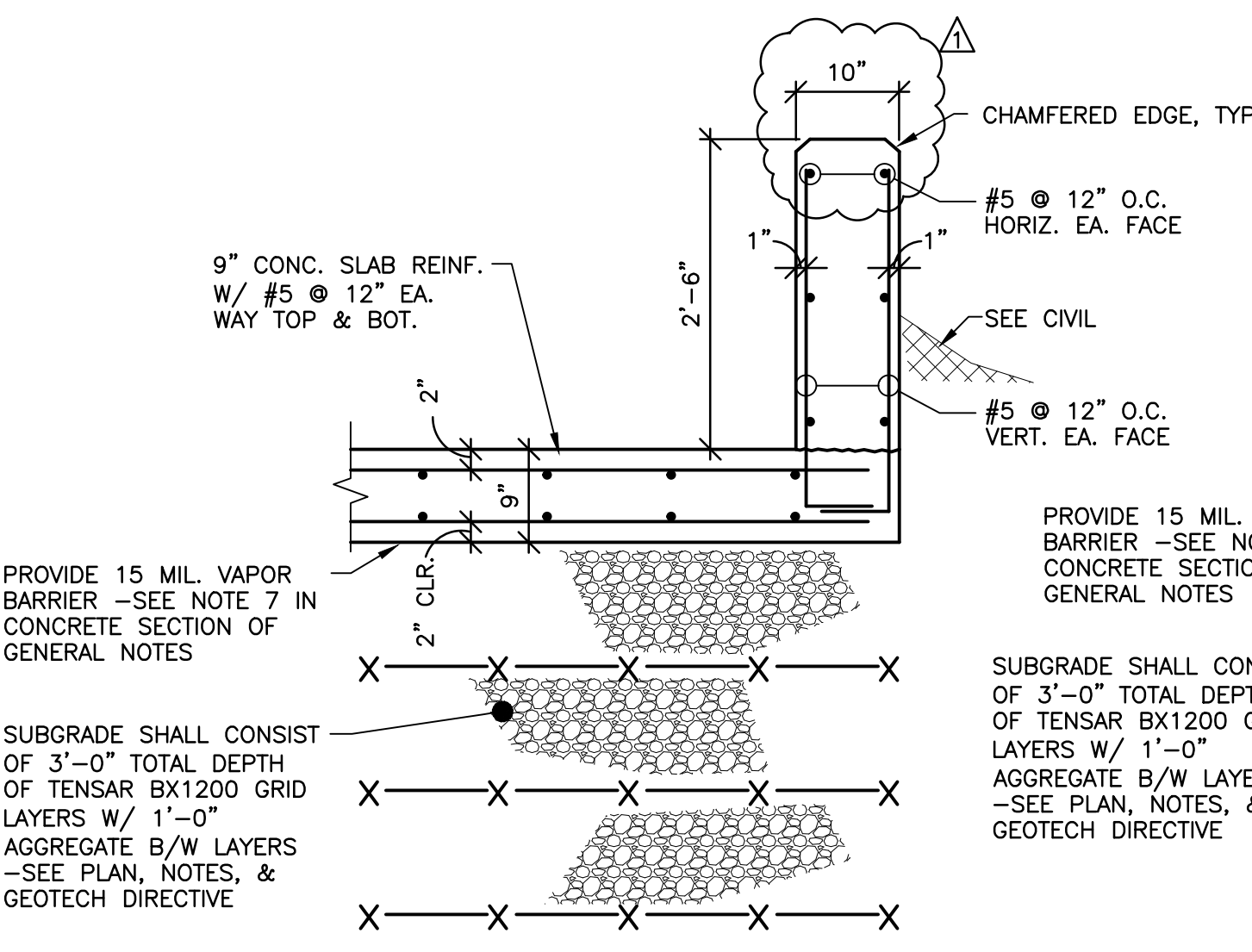
- CONCRETE DESIGN AND REINFORCEMENT IN ACCORDANCE WITH "BUILDING CODE REQUIREMENTS FOR REINFORCED CONCRETE" (A.C.I. 318) AND WITH "DETAILS AND DETAILING OF CONCRETE REINFORCEMENT" (A.C.I. 315).
- ALL CONCRETE WORK IN ACCORDANCE WITH "SPECIFICATIONS FOR STRUCTURAL CONCRETE FOR BUILDING" (ACI 301). PRODUCTION OF CONCRETE, DELIVERY, PLACING AND CURING TO BE IN ACCORDANCE WITH "HOT/COLD WEATHER CONCRETING" (A.C.I. 305R).
- NO ADMIXTURES PERMITTED WITHOUT THE REVIEW OF ARCHITECT/ENGINEER.
- FOR ALL CONCRETE TO BE PLACED IN SLABS (INCLUDING SLABS ON GRADE) THE SLUMP SHALL NOT EXCEED 4". NO WAIVERS OF THIS REQUIREMENT SHALL BE CONSIDERED. SLUMP FOR OTHER CONCRETE SHALL NOT EXCEED 5". SLAB ON GRADE SHALL BE CAST IN ALTERNATE SECTION HAVING A MAXIMUM AREA OF 1600 S.F. AND A MAXIMUM LENGTH OF 20 FT. NO PUMP MIX. DEPOSIT DIRECTLY FROM CHUTE.
- CEMENT CONTENT FOR STRENGTH & MIX DESIGN NOTES:
5000PSI CONC. - 7 BAGS MIN. W/ 0.50 MAX. W/C RATIO
PROVIDE 45 PCY DRAMIX 3D 55/60LB STEEL FIBER FOR IMPACT STRENGTH
DEPOSIT DIRECTLY FROM CHUTE ALLOWING INCREASED COARSE AGGREGATE CONTENT
INITIAL WET CURE TO ENSURE DENSE SURFACE - SEE NOTES BELOW
- ALL CONCRETE SHALL BE CONTROLLED CONCRETE, NORMAL WEIGHT WITH COMPRESSIVE STRENGTH AS FOLLOWS:
MUD SLAB AS REQUIRED. Fc' = 2,000 PSI
SLAB ON GRADE Fc' = 5,000 PSI NON AIR-ENTRAINED
- PROVIDE 15 MIL. VAPOR BARRIER TO RETAIN MOISTURE IN MIX OVER THE AGGREGATE SUBGRADE LAYER THAT WATER WOULD BLEED INTO AND BE ABSORBED.
- CONCRETE EVAPORATION RETARDER/CURING AIDS:
EVAPORATION RETARDER BELOW TEMPORARILY REDUCES MOISTURE LOSS FROM CONCRETE SURFACES AWAITING FINISHING IN HOT, DRY, AND WINDY CONDITIONS. EVAPORATION RETARDERS ARE NOT CURING COMPOUNDS.
ABSORPTIVE COVER: AASHTO M 182, CLASS 2, BURLAP CLOTH MADE FROM JUTE OR KENAF, WEIGHING APPROXIMATELY 9 OZ./SQ. YD. DRY.
MOISTURE-RETAINING COVER: ASTM C 171, POLYETHYLENE FILM OR WHITE BURLAP-POLYETHYLENE SHEET.
WATER: POTABLE
EVAPORATION RETARDER: WATERBORNE, MONOMOLECULAR FILM FORMING, MANUFACTURED FOR APPLICATION

REINFORCING STEEL: (SHOP DRAWING REQUIRED)

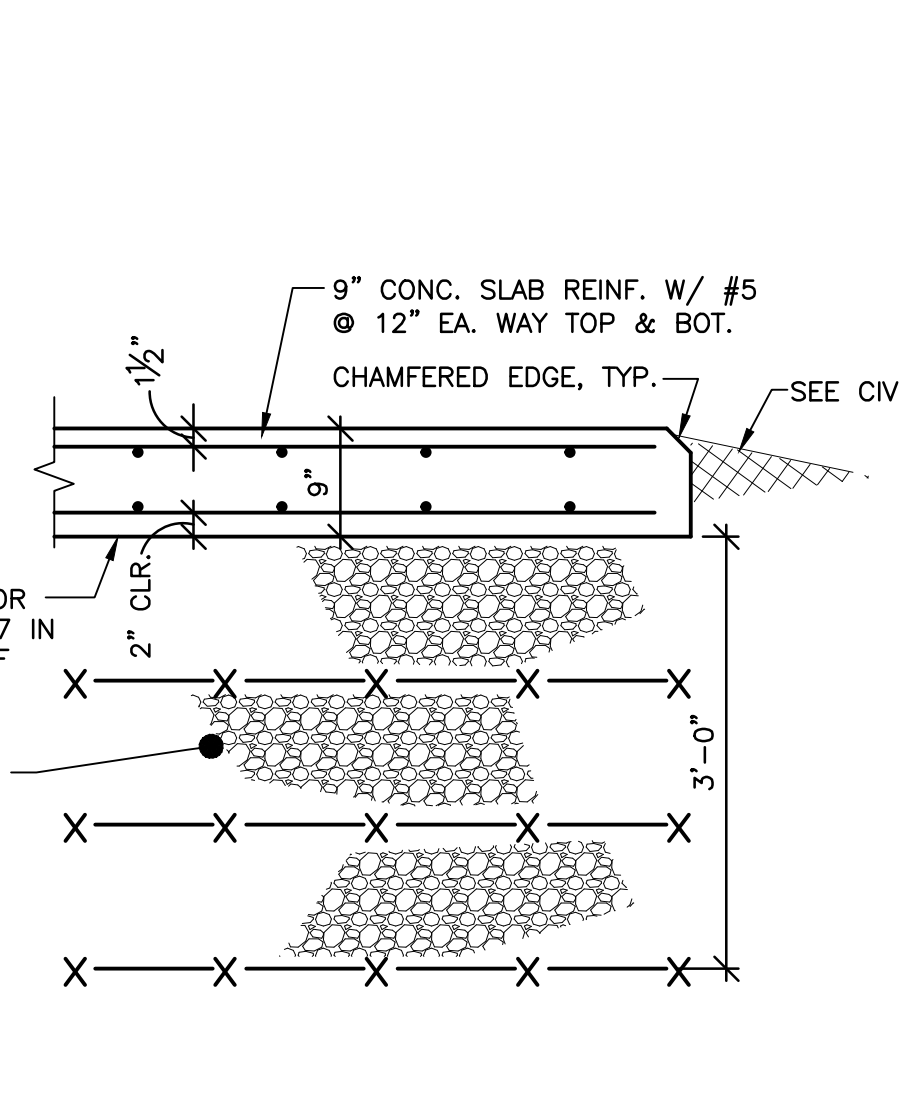
- TO BE NEW BILLET STEEL CONFORMING TO THE LATEST A.S.T.M. A615 GRADE 60 SPECIFICATIONS, FABRICATED IN ACCORDANCE WITH MANUAL OF STANDARD PRACTICE OF THE C.R.S.I. AND PLACED IN ACCORDANCE WITH A.C.I. 315 AND A.C.I. MANUAL OF STANDARD PRACTICE.
- ALL DOWELS FOR WALLS TO BE SECURED IN POSITION PRIOR TO CONCRETING. DRILLING OR PUSHING THE DOWELS INTO POSITION IN WET CONCRETE IS NOT PERMITTED.
- CONCRETE COVER AS DETAILED ON DRAWINGS.
- SLAB AND BEAM REINFORCEMENT: PLACED IN ACCORDANCE WITH REINFORCING DIAGRAMS, LAPPED 36 BAR DIAMETER OR MINIMUM 18". BOTTOM BARS SPLICED ONLY AT SUPPORTS. TOP BARS SPLICED ONLY AT MID-SPAN. ALL TOP BARS HOOKED AT NON-CONTINUOUS EDGES (U.O.N.). ALL HOOKS TO BE STANDARD 90 DEGREE OR 180 DEGREE HOOKS AS REQUIRED (U.O.N.).
- ADDED REINFORCEMENT: PROVIDE ADDITIONAL CORNER BARS BENT 2 FT. MINIMUM EACH WAY AT CORNERS IN OUTER FACES OF ALL BEAMS TO MATCH ALL HORIZONTAL BARS NOT DETAILED WITH A HOOKED END.
- THE CONTRACTOR SHALL INFORM THE REBAR DETAILER OF HIS PROPOSED REBAR SUPPORT METHOD AND CONSTRUCTION SEQUENCES. ALL SUPPORT ITEMS AND SPLICES REQUIRED SHALL BE SO DETAILED AND PROVIDED.
- SEE THE REQUIREMENT FOR STEEL FIBER ADMIXTURE FOR IMPACT STRENGTH



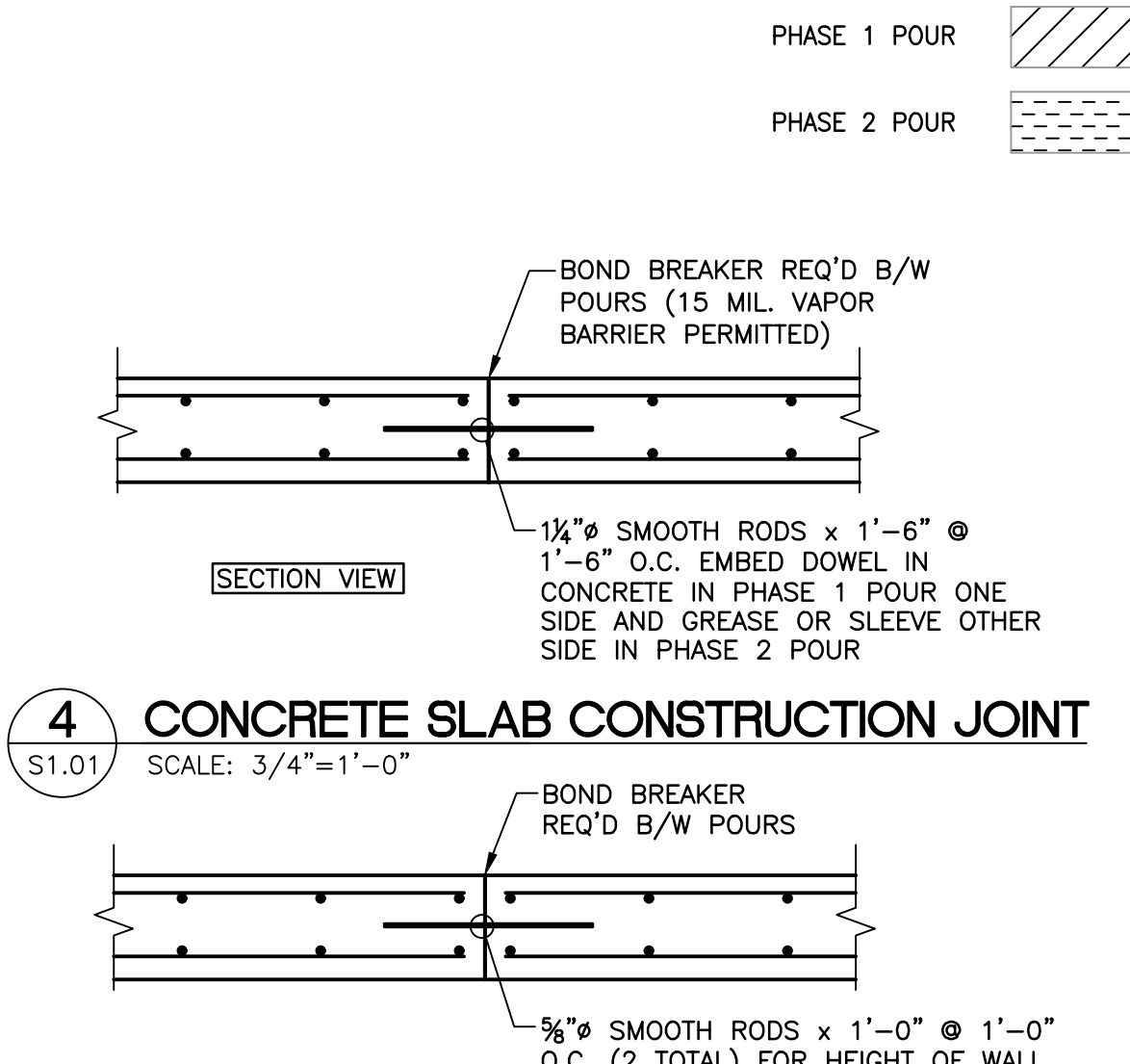
1 CONCRETE SLAB PLAN
SCALE: 1/8"=1'-0"



2 SECTION AT KNEE WALL
SCALE: 3/4"=1'-0"



3 EDGE OF SLAB SECTION
SCALE: 3/4"=1'-0"



4 CONCRETE SLAB CONSTRUCTION JOINT
SCALE: 3/4"=1'-0"



5 KNEE WALL CONSTRUCTION JOINT
SCALE: 3/4"=1'-0"

PROVIDE 15 MIL. VAPOR BARRIER - SEE NOTE 7 IN CONCRETE SECTION OF GENERAL NOTES

SUBGRADE SHALL CONSIST OF 3'-0" TOTAL DEPTH OF TENSAR BX1200 GRID LAYERS W/ 1'-0" AGGREGATE B/W LAYERS - SEE PLAN, NOTES, & GEOTECH DIRECTIVE

PROVIDE 15 MIL. VAPOR BARRIER - SEE NOTE 7 IN CONCRETE SECTION OF GENERAL NOTES

SUBGRADE SHALL CONSIST OF 3'-0" TOTAL DEPTH OF TENSAR BX1200 GRID LAYERS W/ 1'-0" AGGREGATE B/W LAYERS - SEE PLAN, NOTES, & GEOTECH DIRECTIVE

LEGEND:
PHASE 1 POUR
PHASE 2 POUR

- NOTES:
- CONTRACT DRAWINGS SHALL NOT BE USED FOR SHOP DRAWINGS.
 - SEE THIS SHEET FOR GENERAL NOTES
 - CONCRETE MIX DESIGN MUST BE SUBMITTED FOR E.O.R. REVIEW. COLLABORATION BETWEEN CONCRETE SUPPLIER AND E.O.R. RECOMMENDED BEFORE SUBMITTAL. SEE DESIGN REQUIREMENTS IN GENERAL NOTES
 - CHAIRS AND STANDEES FOR REINF. MATS MUST BE SIZED FOR INNER MAT BEARING TOP AND BOTTOM WITH PROPER CLEARANCES ATTAINED. NOT MORE.
 - SPECIAL INSPECTIONS ARE REQUIRED FOR THE REVIEW OF THE IN-PLACE REINFORCING, AND TO OBSERVE THE PLACEMENT AND VERIFY THE MIX DESIGN OF THE CONCRETE. THE SUB-GRADE TENSAR LAYERS SHALL ALSO BE MONITORED TO VERIFY PROPER PLACEMENT.



THIS DRAWING IS THE PROPERTY OF CAMPCO ENGINEERING, INC. AND IS NOT TO BE REPRODUCED OR COPIED IN WHOLE OR IN PART. IT IS NOT TO BE USED ON ANY OTHER PROJECT AND IS TO BE RETURNED ON REQUEST.

2. MATERIALS, DIMENSIONS, AND ALL OTHER CONDITIONS WHICH ARE NOT OTHERWISE DEFINED ON THIS DRAWING SHALL BE CONSTRUED AS HAVING THE SAME MEANING AS SIMILARLY INDICATED CONDITIONS WHICH ARE MORE FULLY DEFINED ELSEWHERE ON THIS PROJECT OR OTHER DRAWINGS ON THIS PROJECT.

1171 Market Street, Suite 203
Fort Mill, SC 29708
704-408-1698

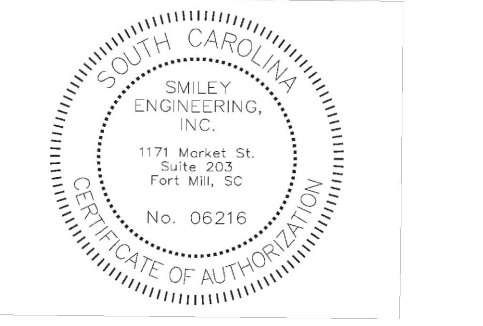
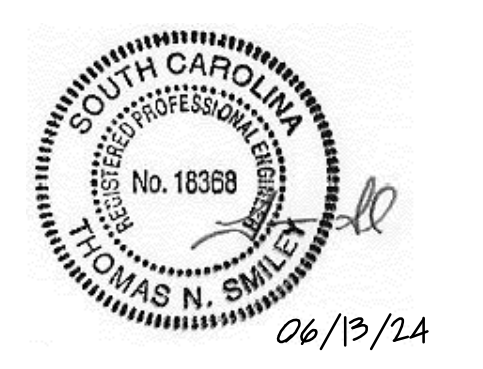
CONCRETE PAD ADDITION FOR RECOVERED MATERIALS PROCESSING FACILITY

320 RECYCLE CENTER RD
YORK, SC 29745



REVISIONS		
NO.	DATE	DESCRIPTION
1	06/13/24	DIM. CLARIFICATIONS

CONCRETE PAD PLAN, SECTION, & GENERAL NOTES



CE: 9902 ISSUED: 05-22-24
SCALE: AS SHOWN CAD FILE:

S1.01